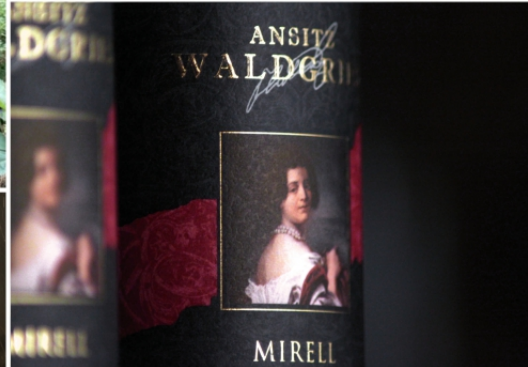


# ANSITZ WALDGRIES

CHRISTIAN PLATTNER



## Lagrein Mirell

The label of Mirell features a mysterious woman. She is young, she is beautiful, and her clothing and jewellery suggest wealth - but who is she? When Christian's grandfather acquired the Ansit, her portrait was already hanging in the old building - why? We have often tried to discover the origin of the painting and who she is, always without success. It is as if she does not want us to unveil her secret. She feels a little like the protector of the Ansit, watching over everything. She keeps an eye on everyone who passes by- and was painted using the same technique as the Mona Lisa. No matter where you stand, she seems to be looking at you. And who knows: perhaps one of our guests will someday provide a clue as to who she might have been...

### *Winemaker note:*

*"For a long time, it was believed that such a Lagrein could not be made. It was thought to be impossible to unite the qualities of power and elegance. With Mirell, I proved the opposite. While the aromas are deep and robust, they are carried by fine tannins and mature acidity, giving the wine an elegant character. The grapes come from vines that are over 40 years old. I allow the must to macerate for up to four weeks, leaving some grapes uncrushed. Afterwards, the wine ages for one year in barriques, followed by an additional 18 months in the bottle."*

# ANSITZ WALDGRIES

CHRISTIAN PLATTNER

*Variety* 100% Lagrein

*vineyards and climate* Two thirds of the grapes come from S. Maddalena. They give the wine its concentration and elegance. One third is from Ora. Those grapes add body and structure.

*soils* S. Maddalena with glacial till and eroded porphyry soils; Ora with alluvial soils

*Winemaking* Barriques, long maceration lasting up to 35 days in large casks; ten percent of the grapes are harvested late

*Serving temperature* 18°C

*Food pairings* Braised and roasted dark meats, game e.g. venison, spicy hard cheeses

*Aging* Dark and cool (approx. 12-14°C) with minimum temperature fluctuations

**Eye:** deep purple

**Palate:** dense and elegant structure, finely structured delicate tannins, persistent body

**Nose:** ripe black cherry, forest floor, tertiary aromas, with an elegant hint of fine herbs

**Nice to know:** The Waldgries estate dates back to the 13th century. Lagrein Mirell was created in 1999 in an experiment with minimum yields. The wine is only produced in outstanding years.

